

**SEW CREATIVE AND COLORFUL!
SO MANY NEW AND EXCITING VENDORS!**

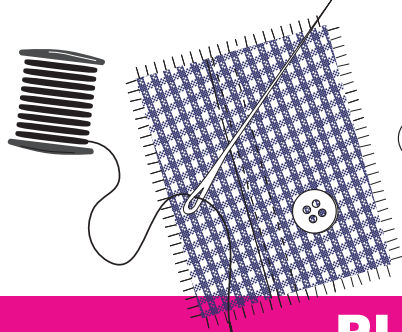
Salt Lake City Quilt, Craft & Sewing Festival



May 18 - 20, 2023

Mountain America Expo Center / Exhibit Hall #5

Free Parking



PLATINUM SPONSORS

brother
at your side

JANOME
Reliability by Design

**Handi
Quilter®**
Designed by a Quilter, for Quilters.®

WELCOME:

The Rusty Barn Promotion Group, Inc. welcomes you to the Salt Lake City, Craft and Sewing Festival at Mountain America Expo Center.

At our show you will find a wide variety of Sewing, Quilting, Needle-art and Craft supply exhibits from many quality local and national companies. In addition, you will have the opportunity to participate in one or more of the many "Make and Take" Workshops or FREE educational Seminars.

Your ticket is good all three days of the show — so please take your time and don't miss any of the exciting new products, techniques or educational ideas.

Rusty Barn Promotion Group, Inc.

Chris Butler & Eric Spillet

2022 South 2100 East, Suite 201

Salt Lake City, Utah 84108

rustybarn1@aol.com

SHOW RULES:

The following rules are established for everyone's comfort and safety. We hope these guidelines will help make this event as enjoyable as possible.

PLEASE DO NOT TOUCH - Please do not touch the displays. If you would like help with a display, please ask the exhibitor for assistance.

CHILDREN - Children **must** be supervised at all times by an adult. We do not recommend small children participate in the workshops.

FOOD-DRINKS-SMOKING - There will be no food or drinks permitted on the show floor, except in the concession areas. Smoking is **not** permitted anywhere in the building.

VIDEOS-PHOTOGRAPHS-SKETCHING - Photography, video taping, or sketching of the exhibitors' booths or merchandise is not permitted.

**FREE
COPY**

EXHIBITOR SEMINAR DESCRIPTIONS:

LEARN BASIC WOOL

Midway Wool / Jen Anderson (booth #A)

Come and enjoy a free "Make and Take" interactive class using wool. You will leave with a fun project and knowledge on how to get started on a wool project.

Classroom #2, 2:00 pm

LIKE SPEED?

Connie Spurlock (booth #212)

LIKE SPEED? How would you like to piece 150 pieces of fabric in an hour. Learning about the 10 Degree ruler will offer you lots of fun projects that will amaze you – make a decorator, one of a kind sweatshirt jacket or a very quick set of placemats no measuring – just cut and sew. Lots of ideas here and so little stress!

Classroom #1, 1:00 pm

PANEL IMPROV

Linda Kruusi Mason (booth #1006)

Fabric panels, we all buy them, but then what? Linda will share her design tips and tricks to make quilts, bags and a variety of other

projects that work with panels. All skill levels welcome.

Classroom #2, 12:00 noon

USING BIG BOLD PRINTS FROM THE KAFFE COLLECTIVE TO MAKE WINNING QUILTS!

Lori Allison (booth #306)

Using Big, Bold Prints From The Kaffe Fassett Collective To Make Winning Quilts! Applying simple principles of design to make your large print quilts winners!

Classroom #2, 11:00 am

RULER QUILTING 101

Stephanie Farrell (booth #317)

Get basic knowledge on what's out there so you can make an informed decision on free motion quilting on your home machine or longarm. Tools of the trade.

Classroom #1, 12:00 noon

QUILT THE FUN, FAST & EASY WAY

Stephanie Farrell (booth #317)

This is so simple you can easily be quilting in under 4 hours. I'll explain every little detail now and tell you

where to go for your next step. Don't feel alone join our family and get the support you need and deserve.

Classroom #1, 2:00 pm

THREADOLOGY

Ashley Malinowski (booth #506)

Learn about the different threads Superior Threads manufactures. Topics will include the benefits and differences between Polyester and Cotton, and why choosing the correct needle with your thread will make all the difference.

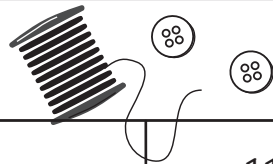
Classroom #2, 1:00 pm

YOU CAN DO IT BETTER!

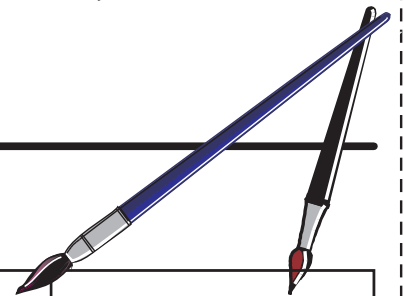
Connie Spurlock (booth #212)

Lots of times there are tips and techniques that can make your projects, faster, easier and with better results. Come and enjoy the fun as we show you the best tips we have learned and you will realize you really can do it better, and my favorite part – FASTER! We will have a handout too.

Classroom #1, 11:00 am



FREE SEMINAR SCHEDULE: (Thursday, Friday and Saturday.)



	11:00 AM	12:00 Noon	1:00 PM	2:00 PM
Classroom 1	CONNIE SPURLOCK YOU CAN DO IT BETTER!	STEPHANIE FARRELL RULER QUILTING 101	CONNIE SPURLOCK LIKE SPEED?	STEPHANIE FARRELL QUILT THE FUN, FAST & EASY WAY
Classroom 2	LORI ALLISON USING BIG, BOLD PRINTS FROM THE KAFFE FASSETT COLLECTIVE TO MAKE WINNING QUILTS!	LINDA KRUIISI MASON PANEL IMPROV	ASHLEY MALINOWSKI THREADOLOGY	MIDWAY WOOL / JEN ANDERSON LEARN BASIC WOOL



HandiQuilter®

BY QUILTERS FOR QUILTERS

Please join Kaye Collins for one or more of the very special HandiQuilter Longarm Hands On Classes, offered throughout the show. The classes include; Fun Free Motion Fills, Let's Talk Rulers, Free Motion Designs for the Artistically Challenged, Confetti Quilting on the Longarm, and Introduction to Computerized Quilting.

Please click this box to access the HandiQuilter Longarm Hands On Class registration page. Or visit the following webpage on your computer:
<https://cvent.me/7QmBkW>

Or please visit us in our booth numbers 600, 601 and 700, 701.

EXHIBITOR MAKE & TAKE WORKSHOPS:

Sign up at the exhibitor booth for each workshop

ASSORTED FLAVORS TEA TOWEL

Sew Wonderful Dreams

Come make a tea towel with the most adorable chick. Choose between designer fabrics and pair it with the tea towel of your choice. Learn applique and make someone special a gift at the same time.

Booth #212, \$5.00

STYLISH PIN CUSHION

Kruusn Quilt Designs

Join us to make a stylish pin cushion. Choose a charming ceramic pot and coordinating fabric to make your needle sharpening pin cushion. This project is a wonderful gift.

Booth #1006, \$5.00



SALT LAKE QUILT, CRAFT & SEWING FESTIVAL

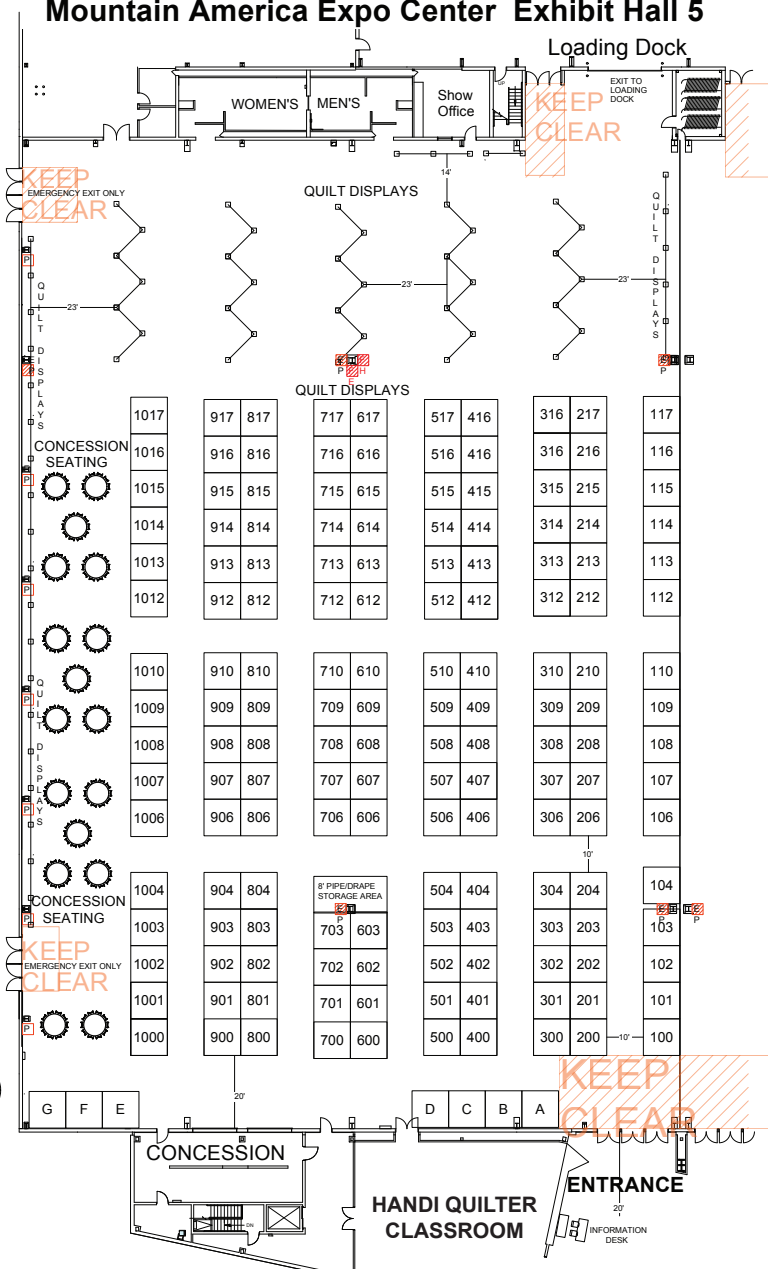
MAY 18 - 19 - 20, 2023

Mountain America Expo Center Exhibit Hall 5

SALT LAKE CITY EXHIBITORS (2022).....	B00TH(S)
ALL ABOUT COLOR QUILTING	306-307
BIG MAT ROTARY CUTTING SYSTEM	206-207
BLOCK PARTY QUILT CO.....	702-703
BO-NASH INC.....	512
CARRIAGE COUNTRY QUILTS	107-111
CATHY'S CREATIONS	816
COLOR STREET	515
COPPER MOUNTAIN QUILTING	308-310
CUSTOM CREATIONS	114-117
CUTCO CUTLERY.....	1010
CUTTERPILLAR.....	716
EASY FAB DESIGN STUDIO	706
ECLIPSE QUILTER	1016-1017
EDMAR COMPANY	608-609
ELEMENT THREAD COMPANY	215
ESSENTIAL BODYWEAR	614
FABRIC CORNER STORE	615-616
FARRELL'S COUNTRY STITCHIN	317
FIBERWORKS	408-410
FIXIN' TO QUILT	1002-1004
FROM MY HEART TO YOUR HANDS	707-708
GAMMILL	612-613 & 712-713
GLOBAL ARTISANS	312-313
GLOBAL MARKETPLACE	717
HANDI QUILTER	600-601 & 700-701
HAWAIIAN MOON	917
ISLAND QUILTER	314-315
JEWERY BY DESIGN.....	1013
JULIE'S SEWING CORNER	812-815
KAI SCISSORS.....	1012
KRUUSN QUILT DESIGNS	1006-1009
LAURA BELLAS	714-715
LEGIT KITS.....	908-909
LOVEJOY FIBERS & KNITS	1015
MAD B'S QUILT & SEW	1014
MAENDELEO	105-106
MARTELLI ENTERPRISES	906-907
MIDWAY WOOL.....	A, B, C, D
MY GIRLFRIENDS QUILT SHOP.....	800-804
MY GIRLFRIENDS QUILT SHOP.....	900-904
MY GIRLFRIENDS QUILT SHOP.....	E, F, G
MY MASSAGE PILLOW	709-710
NOTIONS YOU NEED	316
NUTALL SEWING CENTERS	602-603
NUTALL SEWING CENTERS	604 & 704
NUTALL SEWING CENTERS	100-104
NUTALL SEWING CENTERS	200-204
NUTALL SEWING CENTERS	300-304
NUTALL SEWING CENTERS	400-404
NUTALL SEWING CENTERS	500-504
P CARTER CARPIN / SERIOUS WHIMSEY.....	414-415
PURELY GATES EMBROIDERY.....	208-210
PURSE MAKING SUPPLIES	513-514
QUILT TOP STOP.....	610

QUILTED HEARTZ	509-510
QUILTS ON THE CORNER	516-517
REDFERN ENTERPRISES	817
ROCKY MOUNTAIN ELECTRIC QUILTERS	412-413
SEW 2 CUTE EMBROIDERY SHOP	915-916
SEW N QUILT	806-807
SEW RENEWABLE	913-914
SEW VERY SMOOTH.....	406-407
SEW WONDERFUL DREAMS	212-214
SHABBY ROSE QUILTING & SEWING COTTAGE ...	112-113
STITCHIN BY THE RIVER	1000-1001
SUPERIOR THREADS	506-508

TAILOR MADE TABLES	912
THIMBLES FOR YOU	808
THREAD BEAR.....	809-810
TRUECUT.....	617
UNIQUELY CRAFTS	216-217
UTAH COMBINED GUILD	QUILT DISPLAY AREA
WALKINGSHAW ENTERPRISES	416-417
WIMMERS SEWING & VACUUM	910
WINLINE TEXTILE PRODUCTS	606-607



→ CLASSROOM 1 & 2

Attention! Attention! The Management Staff is not responsible for business dealings or representations made by the exhibitors or customers. Those using or observing display equipment & tools, designed for use by people properly trained for safe operation, agree to do so at their own risk.

Please remember that the following are prohibited: Sketching, videotaping, or photography of exhibitor's booths and/or merchandise. There may be exceptions made for the press or staff personnel with express authorization by the management.

INTRODUCING

MOXIE™

BY HANDI QUILTER

Now every stitch can be yours—from pieced top to finished quilt. Find 15 inches of free-motion freedom with the new HQ Moxie longarm quilting machine.



OWN. EVERY. STITCH. Learn more at HandiQuilter.com/Moxie ▶▶

Sew in Love

WITH THE PERFECT PAIR



brother
at your side

1-800-4-A-BROTHER

[f](#) [t](#) [v](#) [i](#) [p](#) /brothersews

©2020 Brother International Corporation. ©Disney.

A Quilter's Dream:
CONTINENTAL M7



Premium M7 Package

KIMBERLY EINMO QUILTING RULERS, BLOCK OF THE MONTH, SOLID-ISH JELLY ROLL, PLUS THE EXCLUSIVE CONTINENTAL M7 ROLLER CASE

Contact your local Janome Dealer to learn about this amazing package and other unbeatable specials!

    janome.com

JANOME[®]



The Continental M7 is a quilter's dream. It bridges the gap between a domestic sewing machine and a longarm. This one machine does it all for me.

—Kimberly Einmo
Janome National Spokesperson

Visit Janome.com/Continental-M7 to learn more.